

## MGTS Custom Automation with Test Conductor™ Composer



### Key Features

- Centralized test and regression suite management system
- Simple Outlook calendar scheduler
- Performance trend reports

Test engineers are facing numerous challenges today: shorter test cycles, smaller teams, and more complex testing scenarios. Automation is often acknowledged as a possible solution, but has traditionally required extensive training and expertise, discouraging engineers who are already overworked and time-constrained.

Ixia's Test Composer automation framework provides the answer: test engineers can finally realize the productivity benefits of automation without wasting time building scripts for their test tools.

Test Composer allows you to build and execute test suites with no knowledge of the MGTS programming interface. Its point-and-click scripting capability is easy to learn, reduces the time required to automate your test bed, and enables easy scheduling of overnight test runs. Test Composer configures your device(s) under test (DUT), as well as your MGTS test system, and collects results from all test components to determine whether the test passed or failed.

#### Session

- StartSession
- StopSession

#### Download

- DownloadAssignment

#### Other

- GetFile
- PassThrough
- PutFile
- ShelfConnect
- ShelfDisconnect

#### Data Collection

- EMR CollectionStart
- EMR CollectionStop
- PacketGenStatus
- PacketGenStatusReset
- TrafficCollectionStart
- TrafficCollectionStop
- TrafficGenStatus
- TrafficGenStatusReset

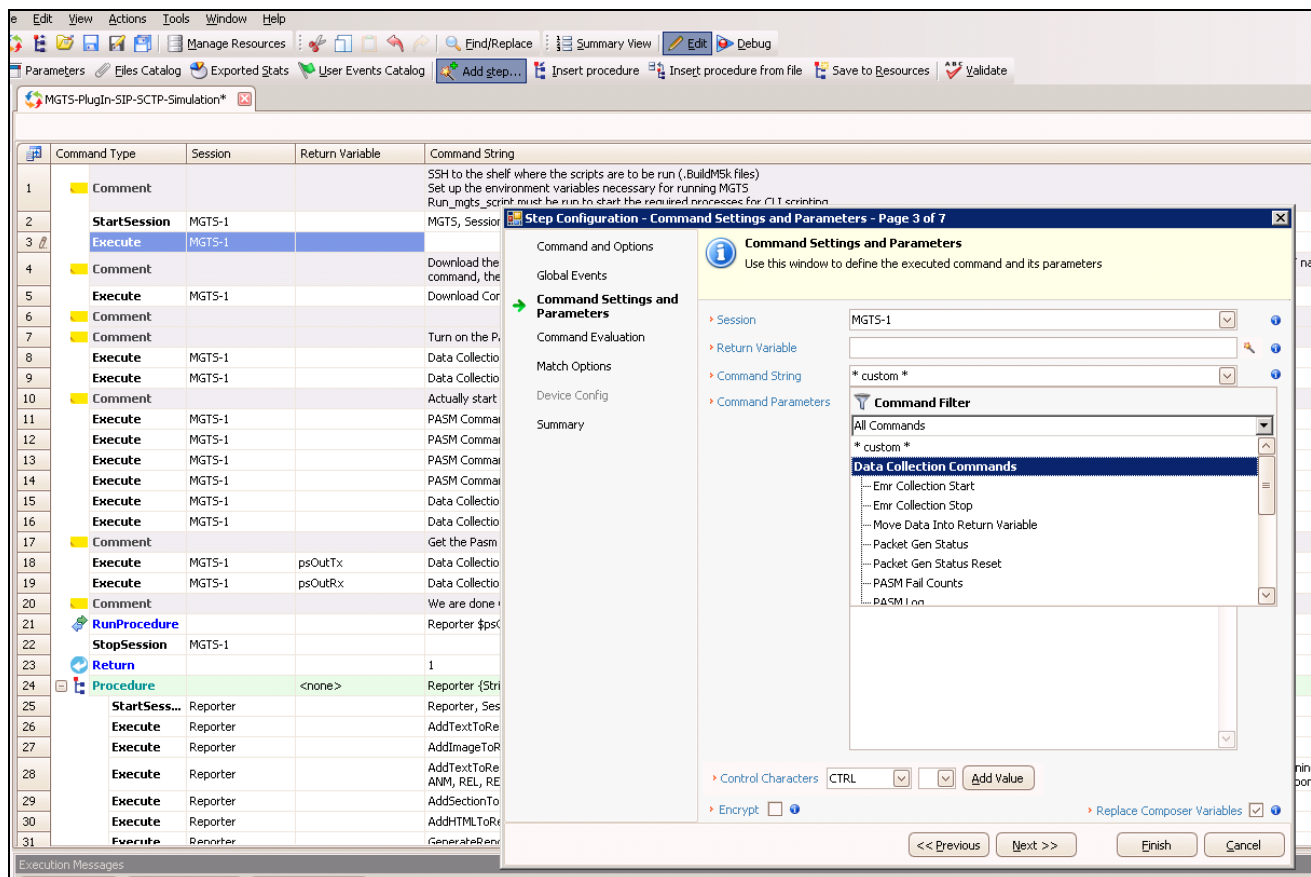
#### PASM

- Load Run/Stop
- SimulationRun
- FailCounts
- PassCounts
- Log
- Status

### MGTS Command Summary

Test Composer offers test engineers more control over the MGTS application than any other automation tool on the market. The commands offer actions that allow you to download the test, start the test and check the status of the test. The Data Collection commands provide visibility at different levels from the high-level pass/fail status of the different state machines to the low-level EMR and Traffic reports. Test Composer validation steps use these collected statistics to check the results for test pass or failure.

Constructing and debugging tests has never been easier. The tests developed in the MGTS interface are used as the starting point for the automation. This shortens development time for new tests and allows the user to experiment with different scenarios before making formal changes to the test.



### ***Test Composer & MGTS work together to accelerate test development***

Even if full regression test automation isn't the ultimate goal, Test Composer can also accelerate the process of manual testing. By constructing test sequences that automate DUT configuration as well as MGTS configuration, manual test engineers can quickly move past test setup into active testing.

Once tests have been constructed in Test Composer, they are easily managed and scheduled using Test Conductor, Ixia's end-to-end automation solution.==

Test Conductor is easy to use and highly scalable. Test Conductor helps test engineering teams create, organize and catalog their tests and regression suites, scheduling tests to run unattended or on-demand.

## Specifications

PC Operating Systems	Windows XP SP2 Windows Server 2003 SP2 Windows 7
PC Requirements: Test Conductor Server	2.8 GHz Pentium PC, minimum 2-gigabyte RAM, 3 gigabytes HDD
PC Requirements: Test Composer	2.0 GHz Pentium PC, 1-gigabyte RAM
PC Requirements: Test Conductor Automation Agent	2.0 GHz Pentium PC, 1-gigabyte RAM

## Product Ordering Information

### 931-2200

Aptixia Test Composer — Test Authoring IDE

### 931-2211

Aptixia Test Composer — MGTS Integration option

### 931-2221

Aptixia Test Composer — DUT Command Line Interface option

### 931-2222

Aptixia Test Composer — DUT SNMP Interface option

### 931-2223

Aptixia Test Composer — DUT SYSLOG Interface option