

Test Conductor™ Test Manager



Important Announcements

- Wide range of test types supported
- Documentation
- Version control
- Test cataloging & filtering
- Distributed access to the test and resource library.
- HP Quality Center integration

Centralized regression repository for test automation

With today's distributed test teams located around the world, keeping track of and managing tests produced by these teams is a significant challenge. Time is often wasted tracking down test cases that were developed for previous releases or by other members of the team. Test documentation is often considered supplementary to test development and execution. As a result the original purpose of the test can be lost with more time wasted trying to understand the original intention of the test.

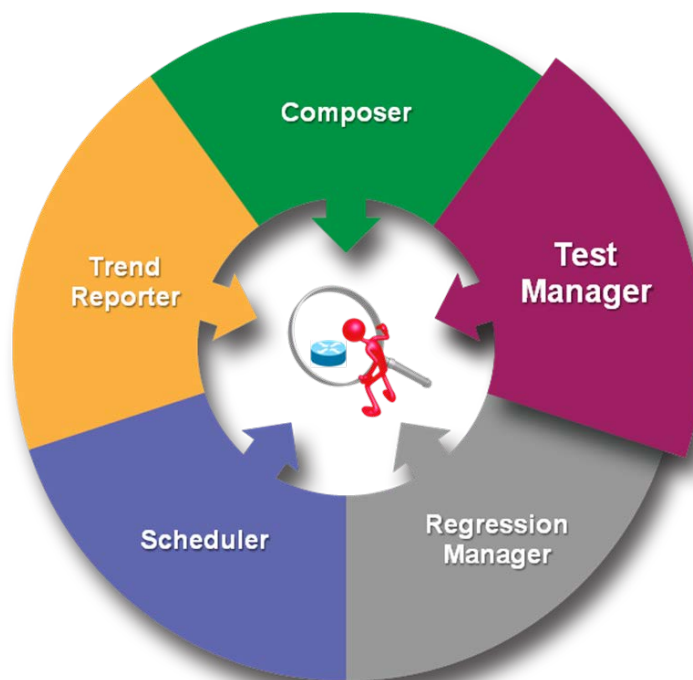


Figure 1. Test Conductor Components

Test Conductor's Test Manager solves these problems by providing an organized means of managing and cataloging test cases. Tests are stored in a library that is accessible by everyone. The tests may originate from a variety of sources including the Ixia suite of products as well as other third party test cases.

Organization of the associated documentation is also handled in the Test Manager. Test engineers can keep track of associated files that are created when building test cases, such as network diagrams or test case descriptions. Attached test files are immediately accessible.

Tests may be filtered and grouped for easy access. To find a test of interest, a test engineer may filter by specific attributes, such as the name of the test, the date the test was created, or some other relevant label assigned to the test. Labels may include the purpose of the test or team ownership. The use of an organized set of labels can significantly reduce the time to uncover essential information needed to develop a new test.

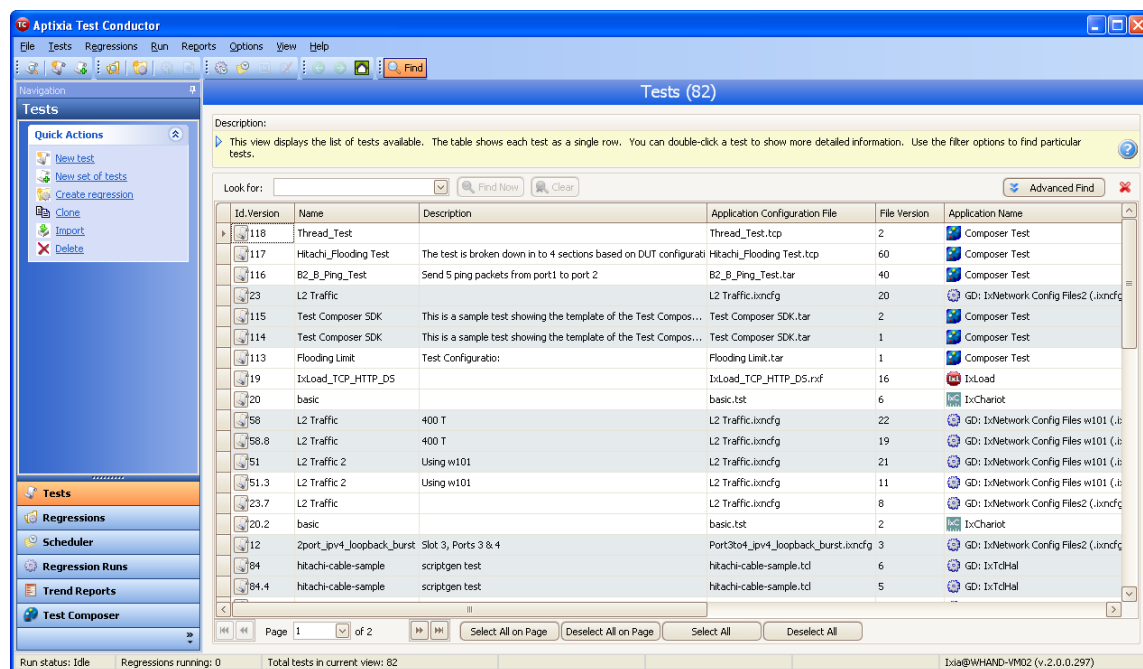


Figure 2. Test Conductor Test Manager

The test manager is also the central repository for other test related components, such as device configurations, test bed assets, common pass/fail criteria assigned to a family of tests and test step response maps.

By organizing all these reusable components into a central repository, test teams are more productive, require less time to produce new test cases and are more likely to make productive use of the team's work.

Key Features

- **Wide range of test types supported** – tests can be managed from a wide range of applications including:
 - IxExplorer™
 - IxNetwork-FT™
 - IxLoad™
 - IxChariot®
 - IxVoice™
 - IxAutomate™
 - IxANVL™
 - Third party test applications, including custom Tcl scripts and other scripting environments
- **Documentation** – brief test descriptions for quick reference and file attachments that allow detailed documentation to be included in any format.
- **Version control** – built-in version control within the test library for instant access to the current and previous versions of a test.
- **Test cataloging & filtering** – instantly look up a test or set of tests using common attributes such as creator, date created or test type. Tests can also be cataloged with a custom set of defined attributes.
- **Distributed access to the test and resource library** – test engineers can remotely access the tests within the library, and view and run the tests. All tests are centrally located so that distributed team members can instantly access any test.
- **HP Quality Center integration** – Test Conductor Test Manager is fully integrated within HP Quality Center. The Test Conductor HPQC integration uses an embedded plug-in that allows test engineers to access Test Conductor tests from within the HPQC web client application without having to install any Test conductor client application.

Product Ordering Information

931-2400

Test Conductor Client Bundle — Test Conductor full client application

931-2401

Test Conductor Basic Test Bundle — Test Conductor basic test client application

931-2100

Test Conductor Console — Test Conductor console application

931-2101

Test Conductor Test Management for IxLoad

931-2102

Test Conductor Test Management for IxAutomate

931-2103

Test Conductor Test Management for IxVoice

931-2104

Test Conductor Test Management for IxANVL

931-2105

Test Conductor Test Management for IxChariot