

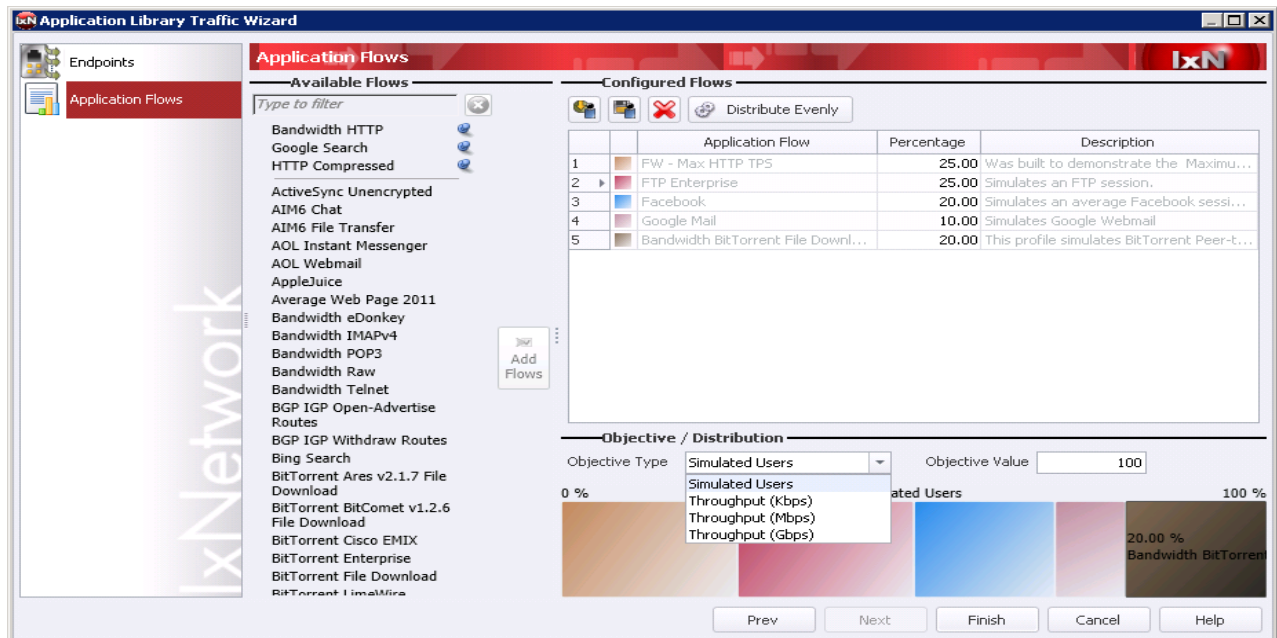
## IxNetwork™ AppLibrary: Application Intelligence for Realistic L2-7 Traffic



### AppLibrary delivers:

- Simplified workflow for multi-application testing
- Deterministic multi-application performance distributions over emulated networks using the emulated hosts
- Extensive library of pre-defined applications flows to simulate end-user interactions and devices
- Comprehensive real-time analysis of per-flow statistics

IxNetwork AppLibrary speeds and simplifies testing with a simplified workflow and framework that simulates application profiles. AppLibrary uses Ixia BreakingPoint Application Threat Intelligence (ATI) technology to provide an extensive library of pre-defined application flows that simulate end-user interactions and devices. The solution combines Ixia's IxNetwork for protocol emulation and stateless traffic generation with the most current real-world stateful application simulations.



**Application Library Traffic Wizard**

## Key Benefits

- Simulate real-world traffic scenarios and user-defined combinations of application simulations, along with a per-application percentage of each application simulation
- Realistic traffic: packet payload dynamically changing in real-time, not just replay of a pre-recorded flow
- Simulate real-world traffic as though it was coming from thousands of real host computers over a live network
- Combined L2-3 and L4-7 traffic over the same ports
- A continually-expanding and updated library of pre-defined application flows; as application definitions are refined, so too is the library updated to reflect the new standards
- Review and compare statistics on a per-application flow and per-port basis
- NAT/PAT Support

## Specifications

<b>Application Simulations</b>	300+, and growing monthly
<b>Application Simulations per port</b>	50
<b>Ports Supported</b>	128
<b>Traffic over Protocol Emulations</b>	Yes
<b>Supported Load Modules</b>	<ul style="list-style-type: none"> <li>• <b>XMVDC Family</b> <ul style="list-style-type: none"> <li>◦ LSM1000XMVDC8</li> <li>◦ LSM1000XMVDC12</li> <li>◦ LSM1000XMVDC16</li> <li>◦ LSM1000XMVDC4NG</li> <li>◦ LSM1000XMVDC16NG</li> </ul> </li> <li>• <b>NGY Family</b> <ul style="list-style-type: none"> <li>◦ LSM10GXM2S</li> <li>◦ LSM10GXM4S</li> <li>◦ LSM10GXM8S</li> <li>◦ LSM10GXM2NG</li> <li>◦ LSM10GXM4NG</li> <li>◦ LSM10GXM8NG</li> <li>◦ LSM10GXM2S-NG</li> <li>◦ NGY-NP2</li> <li>◦ NGY-NP4</li> <li>◦ NGY-NP8</li> </ul> </li> </ul>

	<ul style="list-style-type: none"><li>• <b>IxVM Family</b><ul style="list-style-type: none"><li>○ IxVM Single NIC</li><li>○ IxVM Multi NIC</li></ul></li><li>• <b>Xcellon Family</b><ul style="list-style-type: none"><li>○ Xcellon-Flex AP 10G</li><li>○ Xcellon-Flex AP Combo</li><li>○ Xcellon-Multis CXP</li><li>○ Xcellon-Multis QSFP</li><li>○ Xcellon-Lava</li></ul></li></ul>
--	---

## Product Ordering Information

### 930-3461

IxNetwork AppLibrary Slot Bundle, Layer 4-7 Performance Test Application; Enables support for AppLibrary on a single supported load module. It includes the AppLibrary feature and subscription service to access new application flows for one year period. Requires previous purchase of 930-2056 (IxNetwork Base) or higher bundle.