

Test Conductor™ Regression Manager



Organize regression suites for rapid automation

Network testing technologies are evolving at an extraordinary rate. New devices and services are being developed and delivered so fast that the pressure to get a high quality product to market faster translates into extreme pressures on quality assurance departments.

These new technologies are often extensions to previous product generations and the delivered functionality is a combination of new and existing features. Consequently, test teams need to test not just the new functionality, but also to ensure the correctness, performance, and interoperability of existing functionality.

Key Features

- Increase the usefulness of the tests
- Increase team collaboration
- Increase regression portability
- Instant regression access
- Immediate results notification
- Reduce test execution time
- Reduce transient and false failures detection times.
- Recreate the exact test suite
- Immediate access to results files

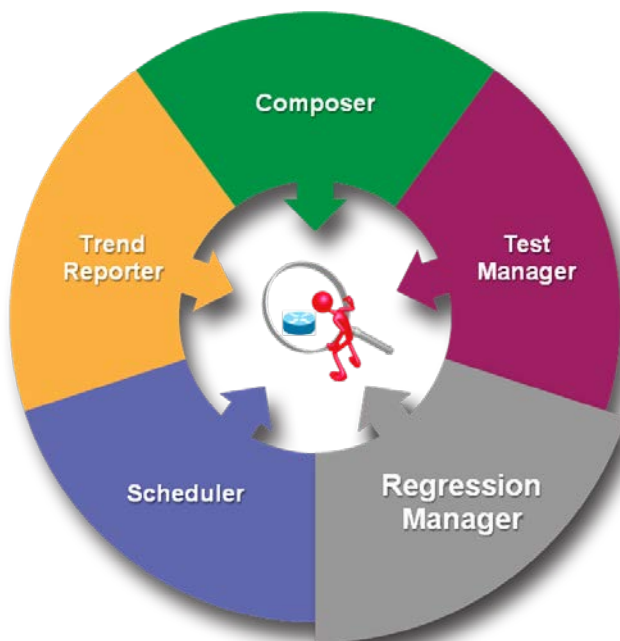


Figure 1. Test Conductor Components

QA teams need to manage their tests in a way that maximizes the use of each test throughout the product lifecycle, including feature, regression, interoperability and system testing.

Test suites should be readily available for use in testing current and previous product versions. Results from the multiple regression runs must be captured for comparative analysis and troubleshooting. An efficient and portable test plan should include a regression test suite.

Test Conductor's Regression Manager is designed to address all of these concerns and much more. With Regression Manager, a test team can combine test cases written by various team members using a variety of testing tools, including the Ixia portfolio of test applications. These tests can then be executed in an automated fashion. Test regressions are tracked and cataloged for instant access. Test cases can be part of any number of regressions.

Regression runs are automatically captured and stored on a central results repository for later analysis. The regressions run unattended 24/7 and progress may be monitored by any number of test engineers.

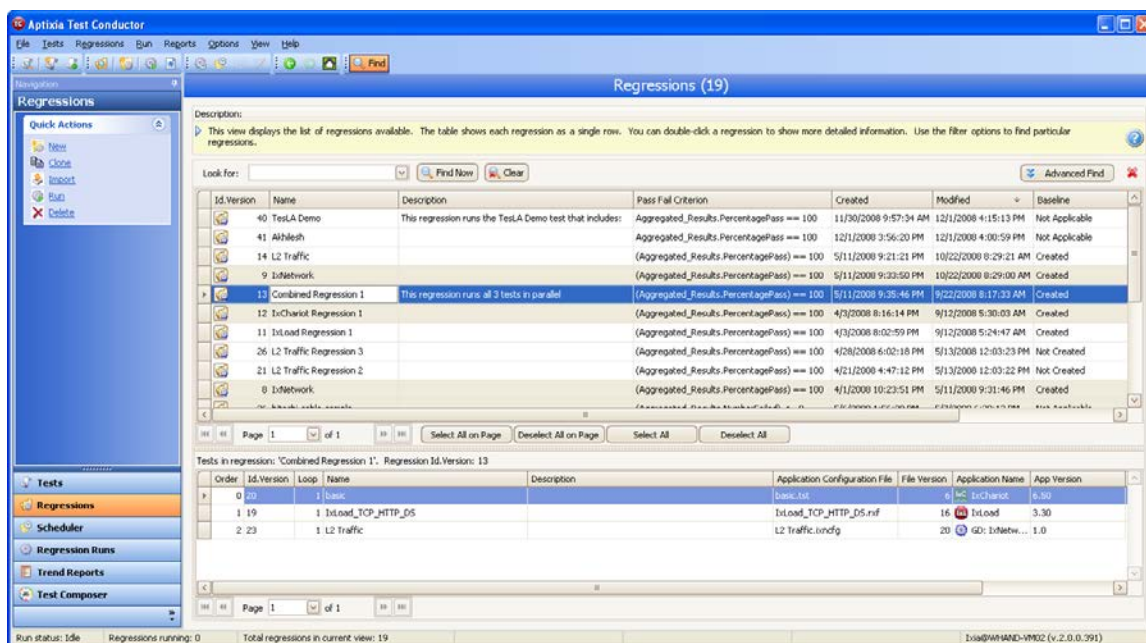


Figure 2. Regression Manager

Key Features

- **Increase the usefulness of the tests** - multitask the tests in any number of regression suites, thus increasing the usefulness of the test throughout the product testing lifecycle. Regression suites are often combined for nightly, weekly and final test regression runs
- **Increase team collaboration** – the Regression Manager provides real-time monitoring and access to test-related information, including logs. Test engineers can simultaneously access these logs during test execution for collaboration.
- **Increase regression portability** – the Regression Manager allows tests to be assigned unique test bed designations that define the test equipment used during a test along with the test input parameters that define the dynamic information needed to run the test

